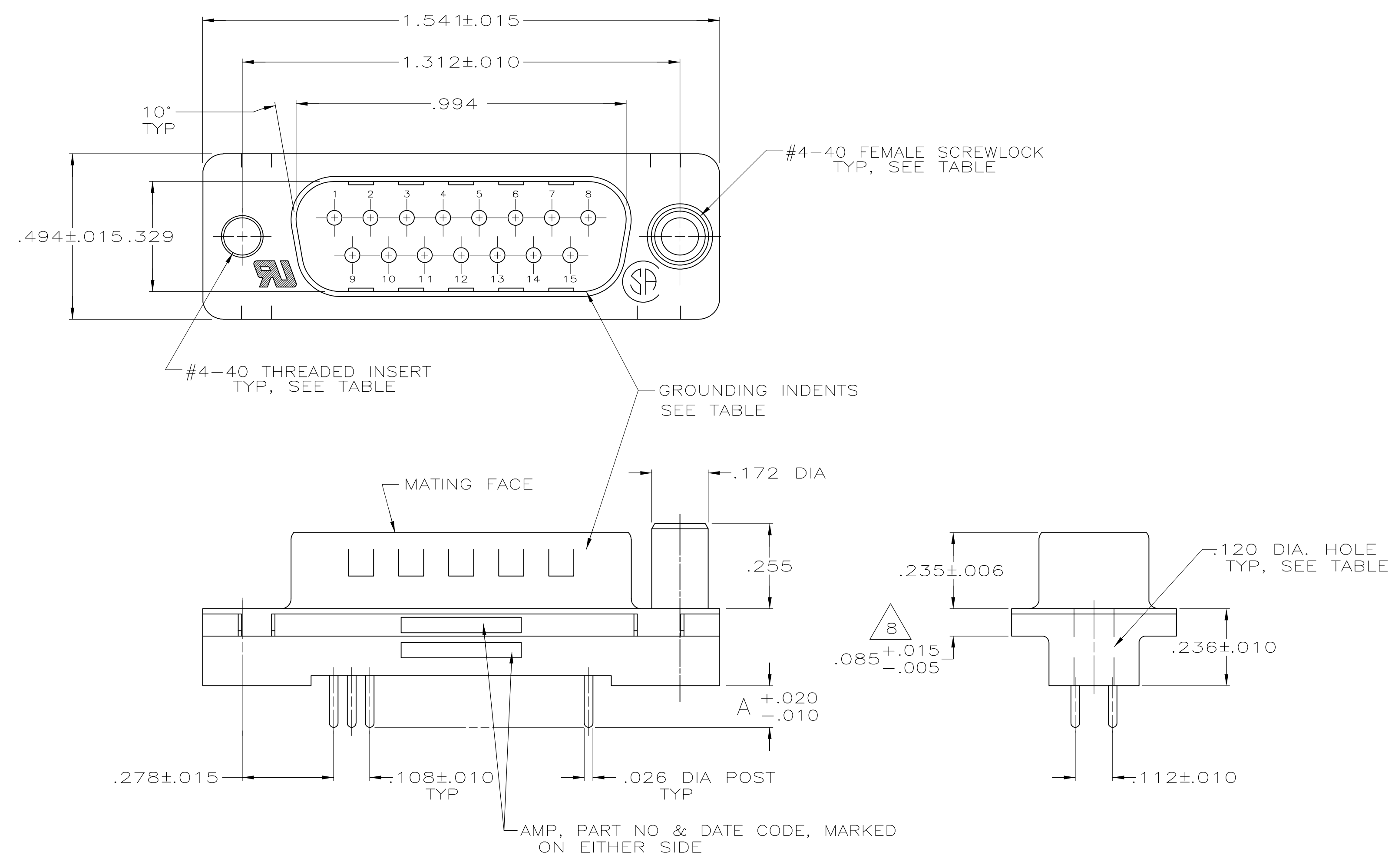
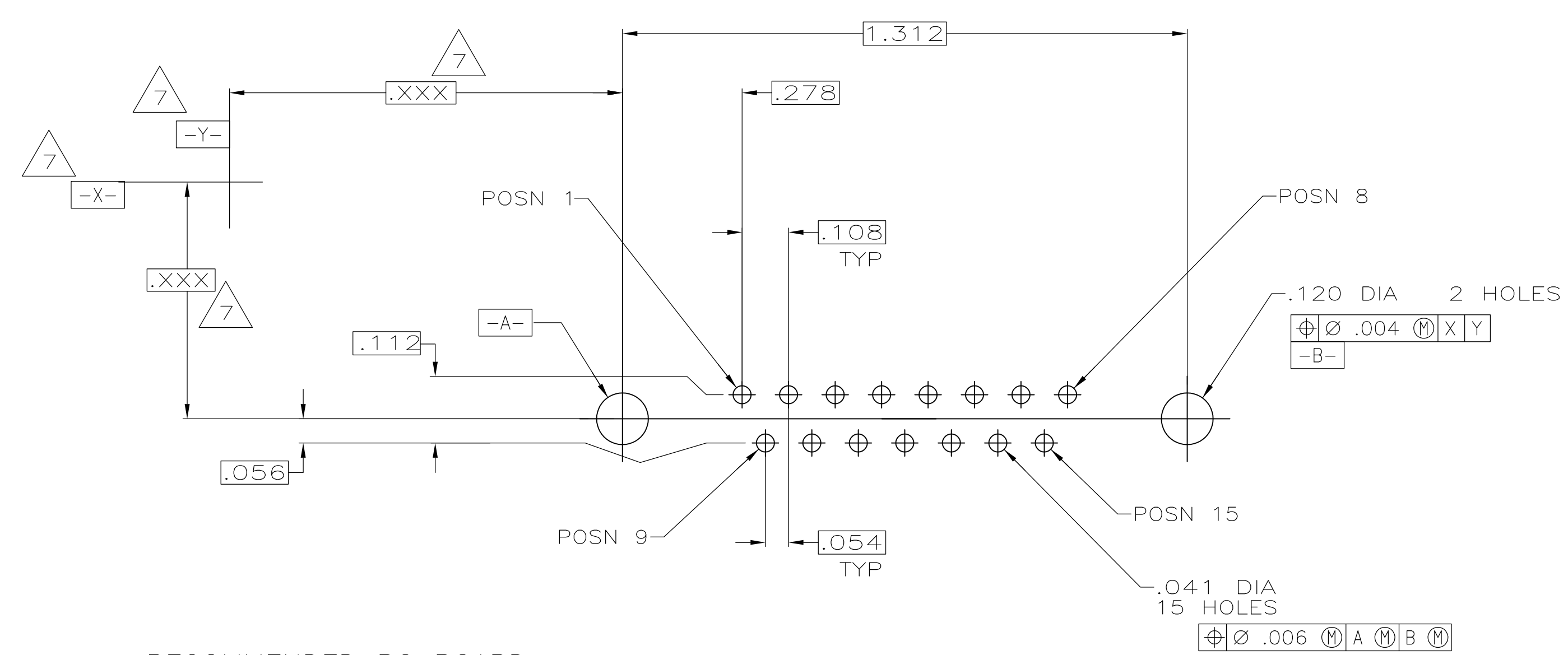


LOC		DIST		REVISIONS			
F	LTR	DESCRIPTION	DATE	DMN	APVD		
L		REVISED PER ECO-09-024765	13JAN2010	CR	SB		



1. NOTE DELETED.
2. HOUSING: FLAME RETARDANT 94V-0 RATED THERMOPLASTIC, BLACK  
 SHELLS: CARBON STEEL  
 CONTACTS: BRASS  
 INSERTS: BRASS  
 SCREWLOCKS: ZINC
3. SHELLS: .000200 MIN TIN OVER .000100 MIN COPPER.  
 INSERTS: UNPLATED.  
 SCREWLOCKS: UNPLATED.  
 CONTACTS: SEE TABLE.
4. GOLD PLATED FOR A LENGTH OF .150 MIN FROM MATING END, GOLD FLASH IN MATED AREA, .000100 MIN TIN OR TIN-LEAD FOR A LENGTH OF DIMENSION A FROM OPPOSITE END, ALL OVER .000050 MIN NICKEL.
5. GOLD PLATED FOR A LENGTH OF .150 FROM MATING END, .000030 MIN GOLD IN MATED AREA, .000100 MIN TIN OR TIN-LEAD FOR A LENGTH OF DIMENSION A FROM OPPOSITE END, ALL OVER .000050 MIN NICKEL.  
 -OR-  
 GOLD FLASH OVER PALLADIUM NICKEL PLATED FOR LENGTH OF .150 FROM MATING END, .000030 MIN PALLADIUM NICKEL IN MATED AREA, .000100 MIN TIN OR TIN-LEAD FOR A LENGTH OF DIMENSION A FROM OPPOSITE END, ALL OVER .000050 MIN NICKEL.
6. NOTE DELETED.
7. DATUMS AND BASIC DIMENSIONS ESTABLISHED BY CUSTOMERS.
8. .110 MAX IN SHELL TAB CLINCH AREAS.



RECOMMENDED PC BOARD MOUNTING DIMENSIONS

OBSOLETE	NO	W/THREADED INSERTS	5	.125	1-747872-9
OBSOLETE	YES	W/FEMALE SCREWLOCKS	5	.250	1-747872-8
OBSOLETE	YES	W/FEMALE SCREWLOCKS	4	.250	1-747872-7
	YES	W/FEMALE SCREWLOCKS	5	.170	1-747872-6
SUPERSEDED BY 1-747872-6	YES	W/FEMALE SCREWLOCKS	4	.170	1-747872-5
SUPERSEDED BY 1-747872-6	YES	W/FEMALE SCREWLOCKS	5	.125	1-747872-4
OBSOLETE	YES	W/FEMALE SCREWLOCKS	4	.125	1-747872-3
OBSOLETE	YES	W/THREADED INSERTS	5	.250	1-747872-2
OBSOLETE	YES	W/THREADED INSERTS	4	.250	1-747872-1
OBSOLETE	YES	W/THREADED INSERTS	5	.170	1-747872-0
OBSOLETE	YES	W/THREADED INSERTS	4	.170	747872-9
OBSOLETE	YES	W/THREADED INSERTS	5	.125	747872-8
OBSOLETE	YES	W/THREADED INSERTS	4	.125	747872-7
OBSOLETE	YES	W/.120 DIA. HOLE	5	.250	747872-6
OBSOLETE	YES	W/.120 DIA. HOLE	4	.250	747872-5
OBSOLETE	YES	W/.120 DIA. HOLE	5	.170	747872-4
OBSOLETE	YES	W/.120 DIA. HOLE	4	.170	747872-3
SUPERSEDED BY 747872-4	YES	W/.120 DIA. HOLE	5	.125	747872-2
OBSOLETE	YES	W/.120 DIA. HOLE	4	.125	747872-1

GROUNDING INDENTS	REMARKS	CONTACT FINISH	DIM A	PART NUMBER
THIS DRAWING IS A CONTROLLED DOCUMENT.				
DIMENSIONS: INCHES		TOLERANCES UNLESS OTHERWISE SPECIFIED:		
0 PLC ± -		1 PLC ± -		
1 PLC ± -		2 PLC ± -		
2 PLC ± -		3 PLC ± -.005		
3 PLC ± -		4 PLC ± -		
4 PLC ± -		ANGLES ± °		
MATERIAL		FINISH		
DIN S.WELDON 12-25-85		CIRK 12-25-85		
CIRK R.RICHARD 12-2-85		NAME R.BRANDT 12-2-85		
PRODUCT SPEC 108-40025		APPLICATION SPEC 114-40023		
SIZE 114-40023		DRAWING NO. 00779		
WEIGHT		SCALE NTS		
CUSTOMER DRAWING		SHEET 1 OF 1		